



**WDi**<sup>®</sup>

**Catalog**



## Company History



6A-0910

WDi (Wellhead Distributors International) was established in 1995 as one of the first whole sale distributors of API-6A wellhead equipments and valves in North America. To satisfy a wider range of customer needs, WDi has since expanded its product line to include high pressure, engineered wellhead systems and specialty valves and its services to include manufacturing, assembly, design and aftermarket repair capabilities. WDi offers a full suite of wellhead equipment, gate valves, mud valves, chokes and engineered wellhead systems.

WDi serves independent wellhead service companies and original equipment manufacturers (“OEMs”) operating in the upstream oil and gas industry through its 16 stocking locations in the United States and Canada. To support customers across the United States and Canada, WDi has strategic distribution locations in Texas, Louisiana, California, Pennsylvania, Oklahoma, Arkansas and Alberta, Canada.

Due to company growth and the need for additional warehouse space, WDi’s central distribution facility is moving to a 65,000 sq ft facility in Houston, TX, that will also serve as the new WDi corporate headquarters. In addition, we are relocating manufacturing to a new, state of the art, API-6A facility in Tomball, TX. To enhance customer service, WDi’s current central distribution facility will soon be converted into a state-of-the-art aftermarket repair facility.

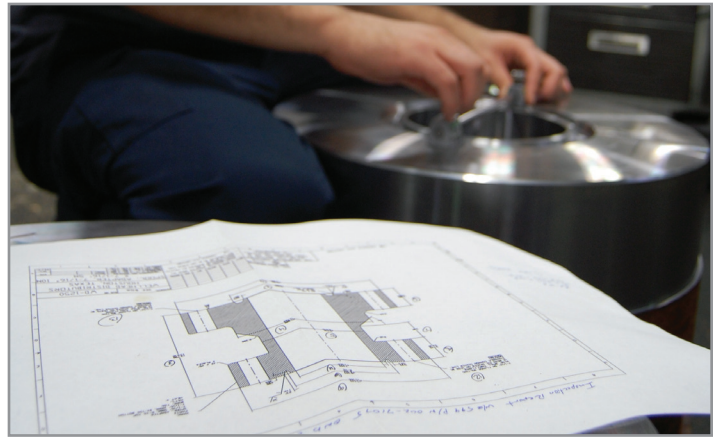
Our versatility and dexterity in handling both large volume orders and individual, custom solutions makes WDi a value added strategic partner for all customers.





# Table of Contents

- WDi Services ..... 4
- Casing Heads ..... 6
- C-22 Casing Spools..... 7
- Tubing Spools and TCM Tubing Spools ..... 8
- WMBS – WDi Multi-Bowl Wellhead System..... 9
- Casing Hangers and Secondary Seals ..... 10
- Tubing Hangers..... 11
- Wellhead Components and Adapters ..... 12
- Tree Caps (BHTA) and Tees and Cross ..... 13
- High Pressure Gate Valves and Frac Components ..... 14
- M Type Gate Valves ..... 15
- FC Type Gate Valves ..... 16
- Mud Valves and Check Valves ..... 17
- Consumables ..... 18
- Conventional Wellhead Configuration Chart..... 20
- Flow Iron..... 21
- Product Warranty and Terms and Conditions ..... 22
- WDi Locations..... 23



## WDi Distribution

WDi Distribution provides a wide range of API-6A products which includes, a full range of slab and wedge gate valves, chokes and related accessory items. API-6A gate valves are stocked in bore sizes ranging from 1-13/16 thru 7-1/16, in working pressures from 2,000 psi to 15,000 psi. These gate valves are available in hand wheel, ball screw operated and hydraulically actuated configurations. WDi Distribution also provides a wide variety of frac components including gate valves, frac adapters (goat heads) and other frac related equipments.

WDi is expanding its inventory capabilities by moving the Central Distribution Warehouse (CDW) to a spacious 65,000 sq ft facility, located in Houston, TX. To support our customers throughout the USA and Canada, WDi Distribution has 12 strategic distribution branch locations in Texas, Louisiana, California, Pennsylvania, Oklahoma, Arkansas and Alberta, Canada. We also have 4 stocking locations through manufacturing representatives in New Mexico, Colorado, North Texas and Utah. WDi logistics gets the equipment where it needs to be on time.

## WDi Engineering

WDi has an engineering department that is dedicated to support our customer needs. Our engineering team has more than 120 years industry related experience. They provide support to manufacturing and sales along with technical assistance to customers. Our engineering department provides support on all API-6A products including full range of gate valves, wellheads, frac equipment and other specialized products. The engineering department offers consultation for customers to provide a high-end solution to their specific needs. They can handle specific requirements and provide custom-made solutions that help to supply customer equipments. Our engineering philosophy is; if we do not have what you are looking for, we will design it for you!





## WDi Manufacturing

WDi manufactures API-6A products. Our focus is on high end wellheads systems, high pressure large bore gate valves and frac components. Our API-6A certified manufacturing facility is located in Tomball, Texas. This location has been manufacturing and designing WDi engineered products and specialty wellhead systems since 2006.

WDi manufacturing delivers high quality solutions with attention to detail to ensure all valves and components are manufactured in accordance with API-6A requirements. WDi manufacturing utilizes proven process tools such as FARO inspection technology to meet quality expectations on all products.

WDi manufacturing utilizes state-of-the-art machine tools which provide a wide range of manufacturing capabilities. These machine capabilities enable our 16 strategic stocking locations to consistently provide solutions to our valued customers.

## WDi Aftermarket

WDi provides OEM (Original Equipment Manufacturers) Aftermarket Service to repair and remanufacture all makes and brands of API-6A Frac Valves, Production Valves and Wellheads.

Our Tomball facility is equipped with the CNC machine tools and we have the capability to perform weld repair, heat treat, hydrostatic testing, hardness testing, material testing while maintaining continuous quality control through out the repair process. In addition, we offer full parts replacement repair and testing at our Odessa and Bossier City facilities as well.

WDi is using MRP in SAP to help plan for future spare parts and equipment. WDi maintains 16 strategic stocking locations with a comprehensive inventory of spare parts for all WDi and associated equipment as well as for products from other popular manufacturers. That inventory ensures a cost-effective and on- time delivery to our customers.

WDi's aftermarket services is best in class. WDi can save you time and money by providing products and services that keep your company on task, on time and ahead of schedule.

# Casing Heads

WDi's C-22 casing heads feature a versatile straight bore design that can accept a wide variety of slip and mandrel type casing hangers.

## Features

- Features a 45° landing shoulder capable of supporting maximum loads
- Prevents test plugs from wedging under pressure

## Outlets

- Line Pipe Outlets
- Studded Side Outlets

## Casing Hanger Compatibility

- C-21 and C-22 slip-type casing hangers
- Mandrel style casing hangers

## Manufacturing Standard

- API-6A, PSL-1, DD, L-U, PR-1

## Availability

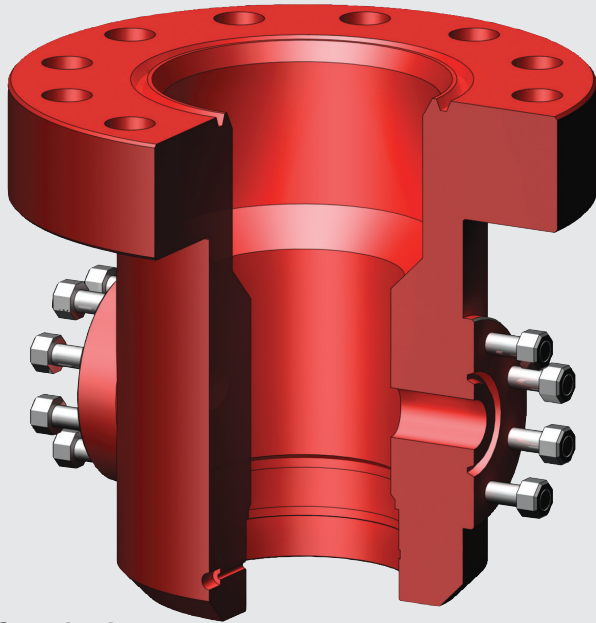
- Additional sizes available upon request
- Available in C-29 profile (Available upon request)

## Lock screws

- C-22-BP casing heads are supplied with (2) lock screws for wear bushing retention
- C-22-L and C-29-L casing heads are supplied with a full set of lock screws for mandrel casing hanger and packoff retention (Available upon request)

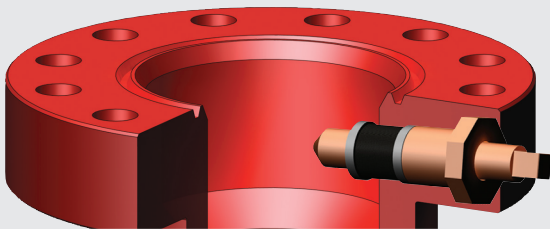
## Bottom Connections

- Slip-on weld
- Slip-on weld with O-ring
- Threaded



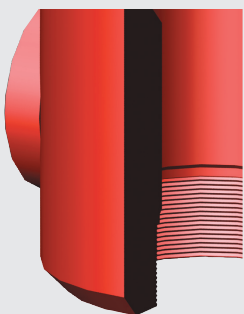
### Standard

*C-22 with Slip on Weld Prep with Line Pipe Outlets and Studded Side Outlets*



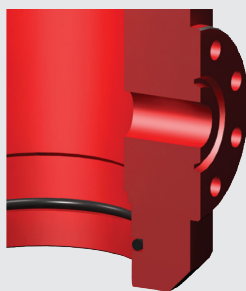
### Optional

*C-22-BP has lockscrews to hold the wear bushing in place*



### Optional

*Threaded Bottom Prep*



*Slip on Weld Prep with "O" Ring*

# C-22 Casing Spools

WDi's C-22 casing spools feature a versatile straight bore design that can accept a wide variety of slip and mandrel type casing hangers.

## Features

- Features a 45° landing shoulder capable of supporting maximum casing loads
- Prevents test plugs from wedging under pressure

## Outlets

- Line Pipe Outlets
- Studded Side Outlets

## Casing Hanger Compatibility

- C-21 and C-22 slip-type casing hangers
- Mandrel style casing hangers

## Manufacturing Standard

- API-6A, PSL-1, DD, L-U, PR-1

## Availability

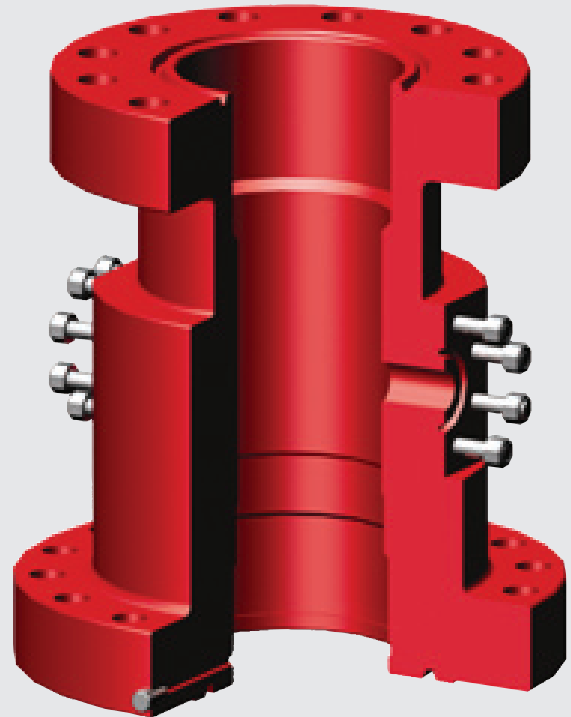
- Additional sizes available upon request
- Available in C-29 profile (Available upon request)

## Lock screws

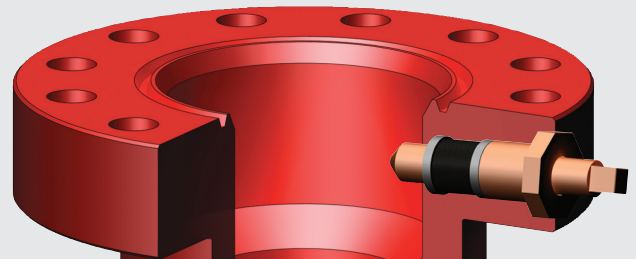
- C-22-BP casing spools are supplied with (2) lock screws for wear bushing retention
- C-22-L and C-29-L casing spools are supplied with a full set of lock screws for mandrel casing hanger and packoff retention (Available upon request)

## Bottom Preparations

- PE/BG bottom, for use with PE secondary seal bushing (Standard)
- HPE bottom, for use with HPE secondary seal bushing for high pressure applications (Available upon request)



**Standard**  
*C-22-BG with BG bottom and Studded Side Outlets also available with Line Pipe Outlets*



**Optional**  
*C-22-BP has lockscrews to hold the wear bushing in place*



# Tubing Spools and TCM Tubing Spools

WDi's TCM tubing heads feature a versatile straight bore design for single and multiple completions. This design accepts all TC series tubing hangers and easily converts from a single completion to multiple completions with the addition and alignment pin(s).

## Available Sizes

- Available with 7-1/16" nominal bowl
- Compatible with 7-5/8" production casing

## Straight-Bore Design

- Features a 45° landing shoulder capable of supporting maximum loads

## Outlets

- Line Pipe Outlets
- Studded Side Outlets

## Manufacturing Standard

- API-6A, PSL-1, DD, L-U, PR-1 (3M-5M)
- API-6A, PSL-2, DD, L-U, PR-1 (10M)

## Tubing Hanger Compatibility

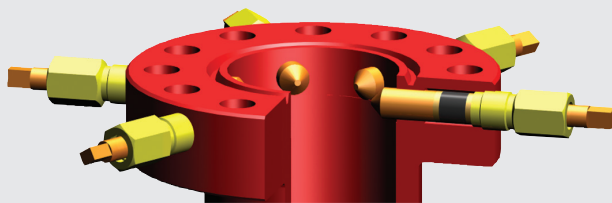
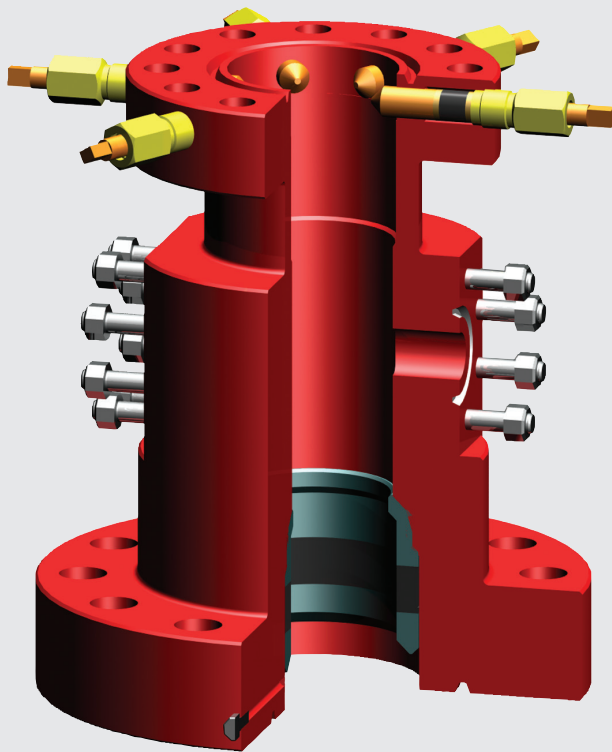
- WTCM tubing heads accept a wide variety of tubing hanger styles including mandrel and wrap-around

## Bottom Preparations

- PE/BG bottom, for use with PE secondary seal bushing (Standard)
- HPE bottom, for use with HPE secondary seal bushing for high pressure applications (Available upon request)

## Availability

- Additional sizes available upon request
- Available with ET (Integral) style lock screws
- Flanged top Tubing Heads available with slip-on weld or threaded bottoms



**ET**  
*(Integral) Lockscrews now standard*

# WMBS – WDi Multi-Bowl Wellhead System

WDi's Multi-Bowl System offers significant time savings advantages over conventional wellheads. WDi's Multi-Bowl System supports and seals two strings of pipe in a single head.

WDi's Multi-Bowl System is made in the USA.

WDi's Multi-Bowl System consists of two pieces: a lower housing and an upper housing-installed as one complete unit. If the intermediate casing sticks, the mandrel casing hanger cannot be used. The two housings can be separated and the emergency slip-style casing hanger can easily be installed.

The Multi-Bowl System comes complete with wear bushings, running tools, standard and emergency pack off, and combination test plug/running-retrieving tool.

## Features

- Backpressure valve profile available in all mandrel hangers
- Field proven
- Saves rig time by reducing installation time
- Increases safety by reducing BOP/ diverter handling
- Fluted mandrel casing hanger allows cement returns

## Outlets

- Studded side outlets
- Line pipe threaded outlets

## Flexibility

- Standard equipment
- Emergency equipment
- Option to remove upper top housing and convert to conventional

## Manufacturing Standard

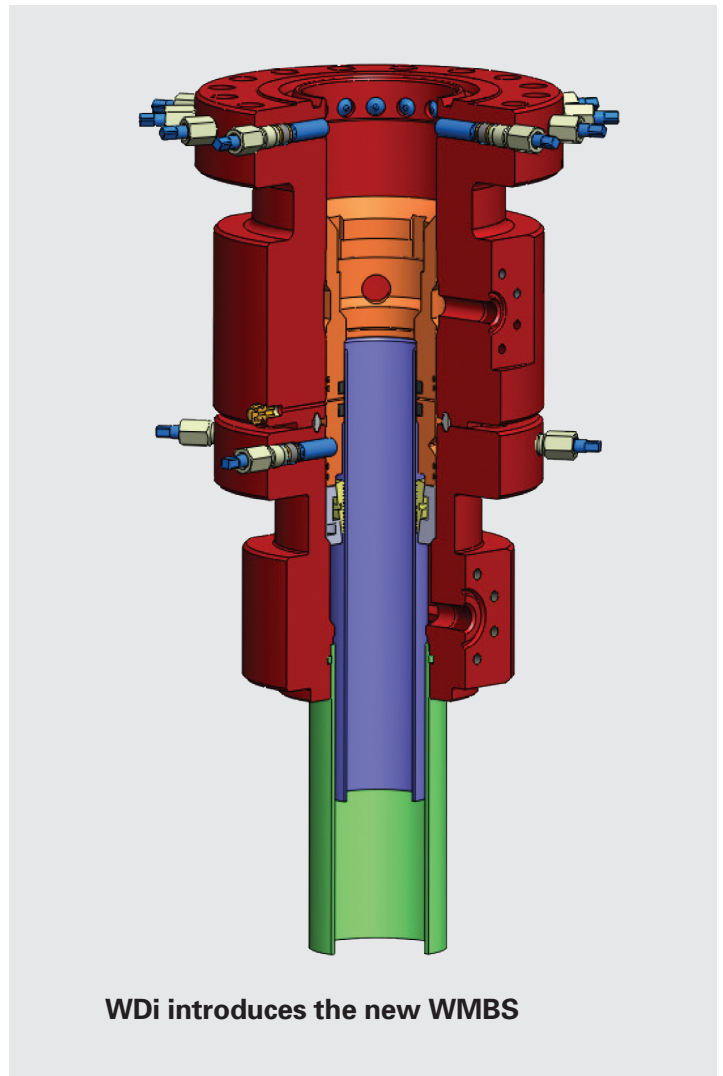
- API-6A, PSL-1, DD, L-U, PR-1

## Availability

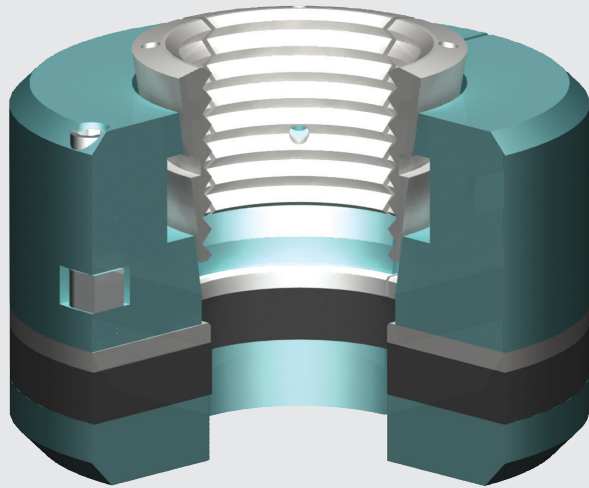
- Available in wide range of sizes and working pressures:
  - 11"-3,000 through 10,000 psi w.p.
  - 13 5/8" - 3000 through 10,000 psi w.p.
  - One or two piece seal assembly available for completion phase
  - System compatible with most casing programs

## Bottom Connections

- Slip-on weld
- Slip-on weld with O-ring
- Threaded (8rd, Buttress)



# Casing Hangers and Secondary Seals



WDi's C-22 automatic casing hangers (wrap around) incorporate a lower packoff, slip bowl, and slips. The lower packoff is energized by the weight of the casing, which provides a positive annular seal.

## Features

- Heavy duty latch and hinge
- Latch cap screw prevents accidental opening of hanger
- Minimum number of parts
- Packoff is automatically energized with casing weight

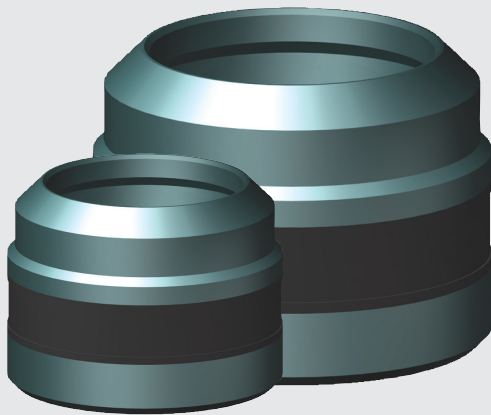
Available in standard API casing sizes.

## Secondary Seals

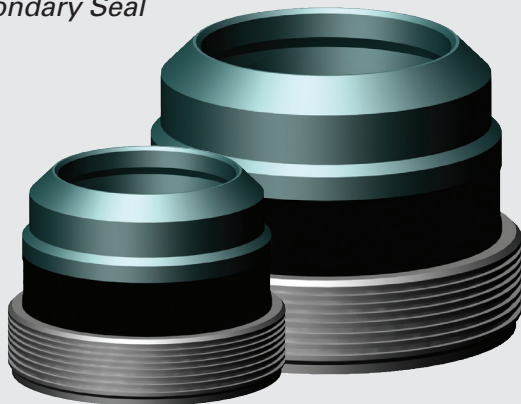
WDi's PE secondary seal is inserted in the bottom preparation of a casing spool or tubing spool and retained with a snap wire. The seal is energized when the spool is installed over the casing stub and the flange connection is made up.

WDi's HPE secondary seal is designed for high-pressure applications. The bottom compression plate is threaded and is inserted in the bottom preparation of casing spools or tubing spools with threaded preparations.

Available in standard API casing sizes.



**WPE**  
*Secondary Seal*



**WHPE**  
*Secondary Seal*



# Tubing Hangers

## TC-1W Wrap-Around Tubing Hanger

Reliable compression seal controls annulus pressure during Christmas Tree installation.

Available in standard API tubing sizes.

## TC-1A Mandrel Tubing Hangers

Reliable compression seal controls annulus pressure during Christmas Tree installation. Lift and suspension threads are available in standard tubing sizes and threads; BPV prep not available on this type tubing hanger.

Available in standard API tubing sizes.

## TC-1A-B Mandrel Tubing Hangers

Reliable compression seal controls annulus pressure during Christmas Tree installation. Lift and suspension threads are available in standard tubing sizes and threads; threaded type H back pressure valve prep also available.

Available in standard API tubing sizes.

## TC-1A-EN Extended Neck Tubing Hanger

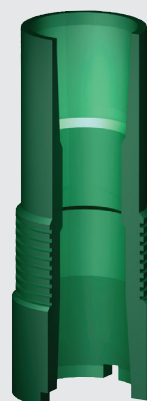
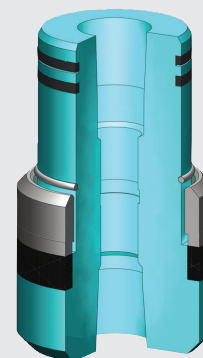
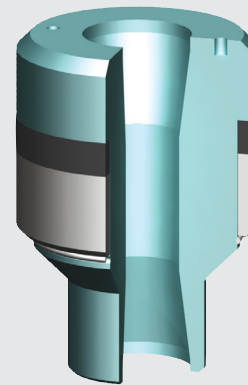
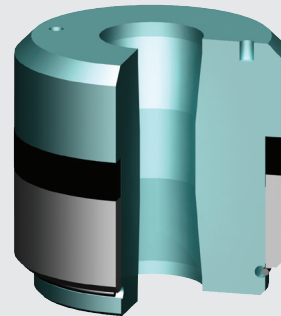
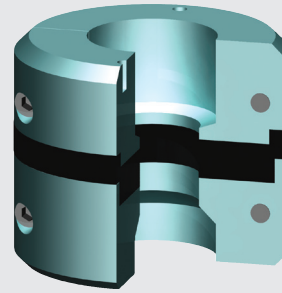
Annular seal is lock screw energized. Reliable compression seal controls annulus pressure during Christmas Tree installation. Lift and suspension threads are available in standard tubing sizes and threads; threaded type H back pressure valve prep standard. Neck seals on tubing hanger provide reliable annulus sealing and isolate DHCV lines.

Available in standard API tubing sizes.

## BO-2 Coupling

Course Acme OD thread makes up easily with minimum risk of damage. Lift and suspension threads are available in standard tubing sizes and threads; threaded type H back pressure valve prep standard.

Available in standard API tubing sizes.



# Wellhead Components and Adapters

WDi offers a wide range of Tubing Head Adapters for various applications.

## B-1 Tubing Head Adapter

Top and bottom connections are available in various sizes. Bottom connections are flanged with EUE 8rd suspension threads. The top connection is EUE 8rd male. Manufactured according to API-6A, PSL-1, DD, L-U, PR-1

## B2P Tubing Head Adapter

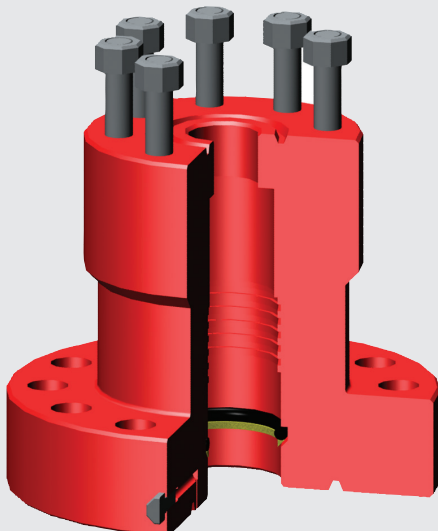
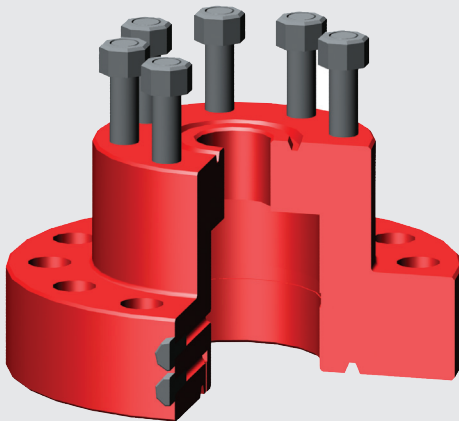
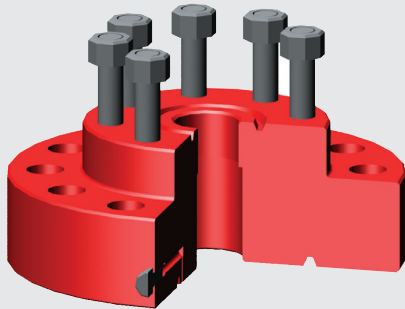
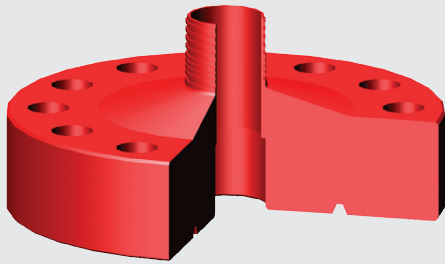
Top and bottom connections are available in various sizes. Bottom connections are flanged with EUE 8rd suspension threads. The top connection is studded. Manufactured according to API-6A, PSL-1, DD, L-U, PR-1

## A5P Tubing Head Adapter

Top and bottom connections are available in various sizes. Bottom connections are flanged with an ID of 5-1/2" typically. The top connection is studded. Available with DHCL port upon request. Manufactured according to API-6A, PSL-1, DD, L-U, PR-1 (5,000psi) and API-6A, PSL-2, DD, L-U, PR-1 (10,000 psi).

## BO2 Tubing Head Adapter

Top and bottom connections are available in various sizes. Bottom connections are flanged with 4" Acme suspension threads. The top connection is studded. Manufactured according to API-6A, PSL-1, DD, L-U, PR-1



# Tree Caps (BHTA) and Tees and Cross

## Tree Caps (BHTA)

Installed on top of Christmas Trees, tree caps allow quick access to the tubing bore. WDi offers a wide range of sizes and working pressures.

## Tees/Crosses

WDi offers a wide range of tees and crosses in various sizes and working pressures.

Note: Some sizes available in 410 stainless steel.

## Chokes

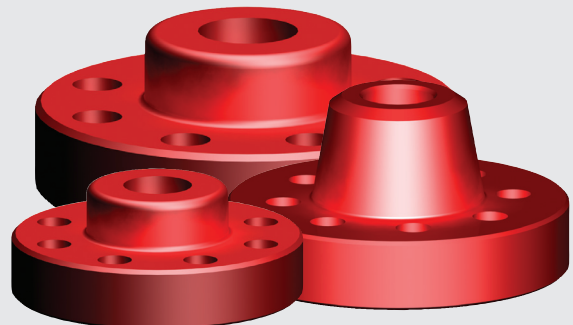
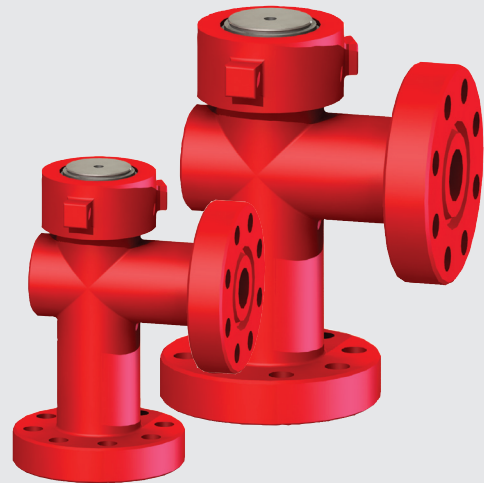
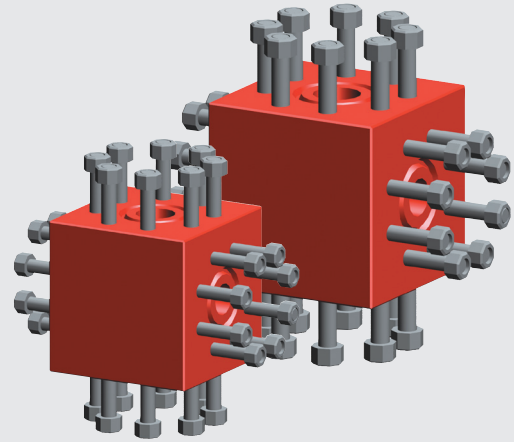
WDi's positive production chokes are designed for reliable flow control and maximum wear life. WDi's chokes are available in flanged or threaded ends in standard bore sizes from 1-13/16" and 2-1/16", in working pressures of 5,000 psi and 10,000 psi.

Adjustable bonnets available upon request.  
Additional sizes available upon request.

## Flanges

WDi offers a wide range of flanges. Blind flanges, companion flanges, and weld neck flanges are some of the products that are available.

- Some sizes available in 410 stainless steel.
- Additional sizes available upon request.
- Additional types (blind and weld neck) of flanges available upon request.





# High Pressure Gate Valves and Frac Components

## High Pressure Gate Valves

WDi offers BSO (Ball Screw Operators) on JFC high-pressure gate valves. It is available in flanged ends in standard bore sizes from 4-1/16" through 7-1/16" in working pressures of 10,000 psi and 15,000 psi. Double acting hydraulic gate valve also available.

## Reduced Torque

- Reduces torque as much as 50%
- 2 Heavy duty thrust bearings assist in further reducing overall torque

## Fewer Turns to Fully Open/Close

## Full-Bore Thru-Conduit Design

- Maximizes valve service life
- Eliminates the collection of destructive particles

## Floating Slab Gate and Seats

- "T" slotted gate allows the gate to float, reducing deflection and binding
- Produces a positive pressure energized seal
- Body pressure equalizes across the seat ring/body bushing, eliminating body erosion in the seat pockets

## Metal-to-Metal Seals

- Body/bonnet interface, gate/seat ring/body bushing interfaces, body/body bushing interface

## In-line Repairability

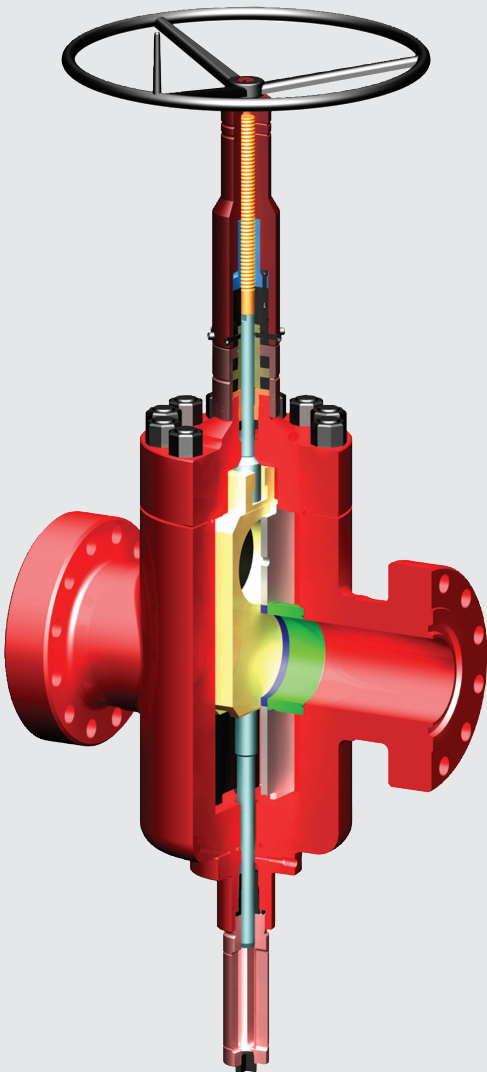
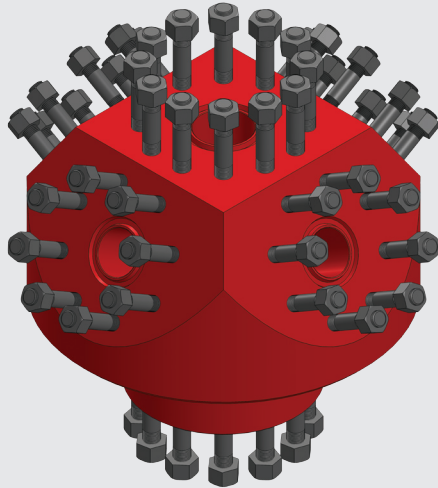
## Metal-to-Metal Backseat

## Long Life, Low Maintenance

- Simple routine maintenance program limits repairs, eases operation, protects against corrosion, and extends service life

## Frac Component

- Frac Adapters made to customer specifications with up to 6 outlets



# M Type Gate Valves

WDi's M type gate valve features a non-rising stem with an expanding gate design to provide safe, dependable service in a variety of environments. It is available in flanged or threaded ends in standard bore sizes from 2-1/16" through 4-1/16" in working pressures of 3,000psi through 5,000 psi.

WDi's M type gate valves in sizes 7-1/16" in working pressures of 3,000 psi through 5,000 psi working pressure are available upon request.

## Full-Bore Thru-Conduit Design

- Maximizes valve service life
- Eliminates the collection of destructive particles

## Expanding Gate

- Produces a positive mechanical seal across the seats
- Isolates the body cavity from bore pressure in both the open and closed position

## Press Fit Seats

- Press fit seats allow the seats to be tightly wedged into the seat pockets in the open or closed position

## Metal-to-Metal Seals

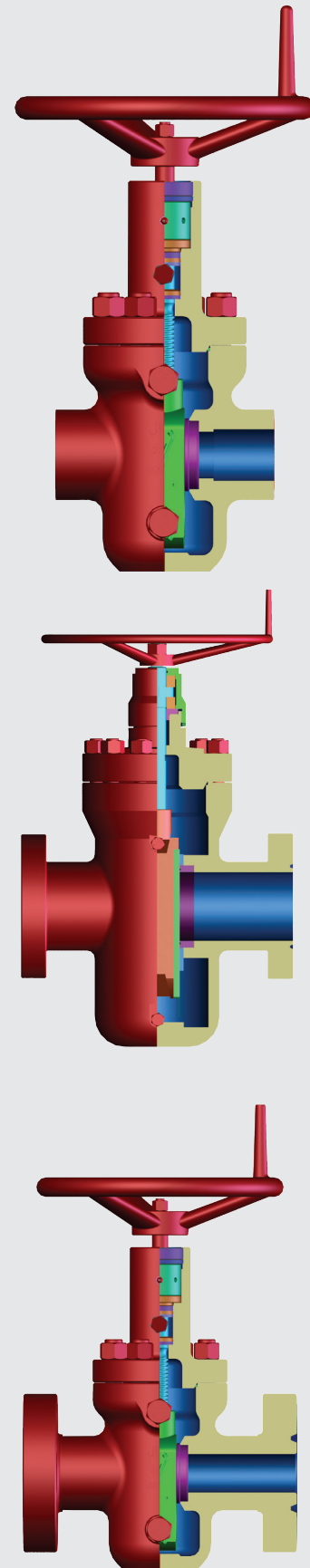
- Body/bonnet interface, and gate/seat interface

## In-line Repairability

- Stem packing is re-energized while the valve is under pressure

## Long Life, Low Maintenance

- Simple routine maintenance program limits repairs, eases operation, protects against corrosion, and extends service life



# FC Type Gate Valves

WDI's FC gate valve features a non-rising stem with a slab gate, floating seat ring body bushing design to provide safe dependable service. It is available in flanged ends in standard bore sizes from 1-13/16" through 7-1/16" in working pressures of 10,000 psi and 15,000 psi wp.

## Full-Bore Thru-Conduit Design

- Maximizes valve service life
- Eliminates the collection of destructive particles

## Floating Slab Gate and Seats

- Produces a positive pressure energized seal
- Body pressure equalizes across the seat ring/body bushing, eliminating body erosion in the seat pockets

## Metal-to-Metal Seals

- Body/bonnet interface, gate/seat ring/body bushing interfaces, body/body bushing interface

## In-line Repairability

- Seat rings, body bushings, gate, stem are easily replaced in the field

## Metal-to-Metal Backseat

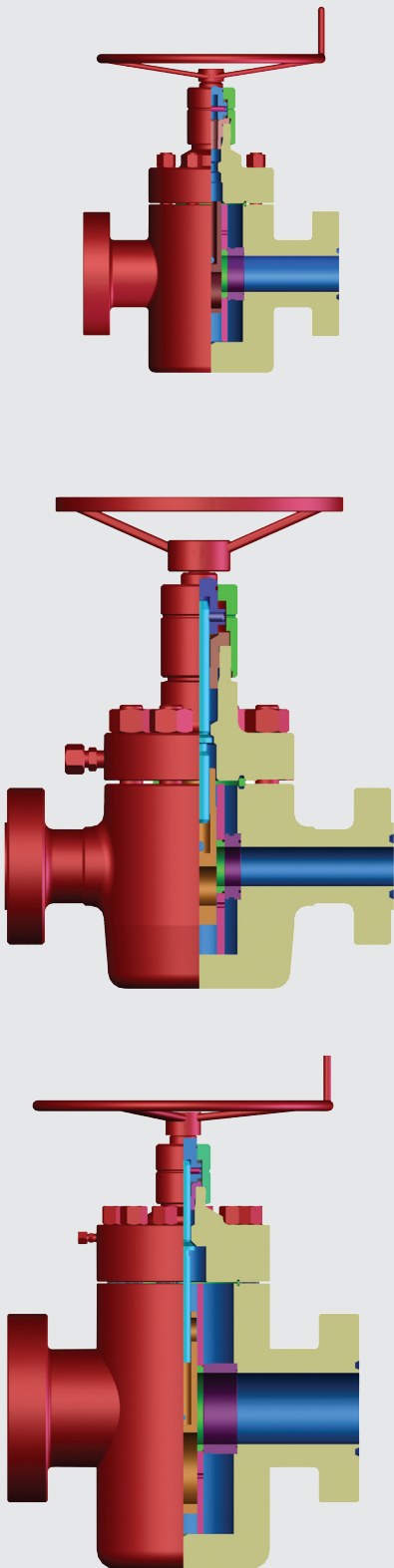
- Allows for body pressure containment in the case of stem packing leak

## Long Life, Low Maintenance

- Simple routine maintenance program limits repairs, eases operation, protects against corrosion, and extends service life

## Also Available

- 5,000 psi wp gate valves
- 15,000 psi wp gate valves
- BSO (Ball Screw Operator) available on the 4-1/16", 5" and 7-1/16" 10,000 psi wp and 15,000 psi wp FC gate valves (coming soon)





# Mud Valves and Check Valves

## Mud Valves

WDi's mud gate valve features a rising stem with a "T" slotted slab gate and unique seat design features dependable, heavy duty performance in abrasive service conditions. It is available in flanged, butt weld, or threaded ends in standard bore sizes from 2" through 5", in working pressures from 2,000psi through 5,000 psi.

## Double Acting Thread Design

- Ensures fast operation

## In-line Repairability

- Bonnet is easily removed for internal parts inspection and/or replacement

## Interchangeability

- Interchangeable with the most commonly supplied valves in the field today

## Check Valves

WDi's MS check valve features metal-to-metal seals used for high pressure and temperature services. Primary applications for the MS style check valves are high-pressure mud choke manifolds and high-pressure Christmas Tree injection and kill lines.

## Streamlined Valve Seat Area

- Results in less flow turbulence and improves body longevity

## Low Maintenance Operation

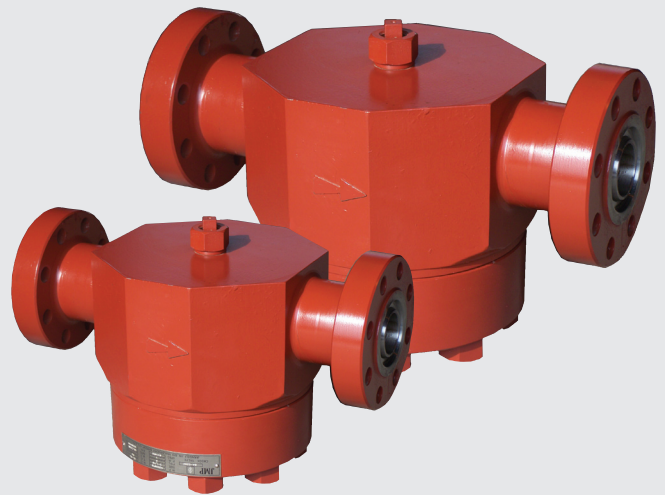
- Non-lubricated and requires no routine maintenance

## Availability

- 2-1/16" 5,000 wp through 10,000 wp, FE
- 3-1/16" 10,000 wp, FE



Mud Valves



Check Valve

# Consumables

## Valve Replacement Parts

Complete line of expanding gate valve components, as well as the most popular slab gate design and parts for resilient seat mud valves. These are available in a wide variety of trims, sizes, and working pressures.

- Mud Valves
- Cameron
- WKM
- WKM

## Hammer Unions

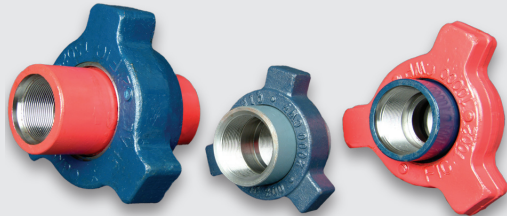
- From Fig 100 through Fig 1502

## Elastomers

- Secondary Seals
- Casing Hangers
- Tubing Hangers
- B02 Adapter

## Bull Plugs, Nipples, & Grease Fittings

- High quality XXH Bull Plugs and Nipples 4" OAL
- 2" Line Pipe Solid
- 2", 1/2" NPT
- 6" Seamless Nipple



# Consumables

## API-6A Metal Ring Gaskets

WDi carries API-6A Monogrammed R-Oval, BX, RX, and combination ring joint gaskets. All ring gaskets are available in low carbon steel and 316 stainless steel (Inconel available upon request). Petromec Rubber-Tip test rings (R and BX) and other types of materials are available upon request.

## Stud Bolts & Nuts

WDi stocks alloy steel stud bolts in 5/8" through 3" diameter and to any length required. All stud bolts are pre-nutted.

- Studs ASTM A193 B7; Nuts ASTM A194 2H HEX
- B7 Black Studs & 2H Nuts
- B7 Zinc Yellow Studs & 2H Nuts

## Swivel Joints

- Style 50 Silver 2" 60000

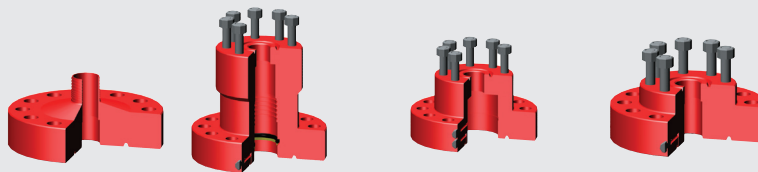
## Spiral Wound Gaskets

- Style CGI

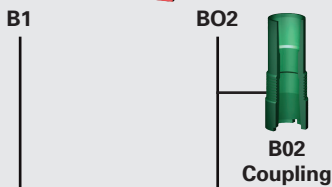


# Conventional Wellhead Configuration Chart

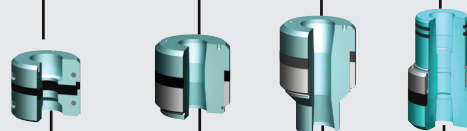
Tubing Head Adapters



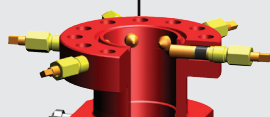
Hanger Coupling



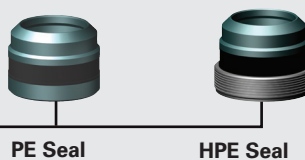
Tubing Hangers



Tubing Spools

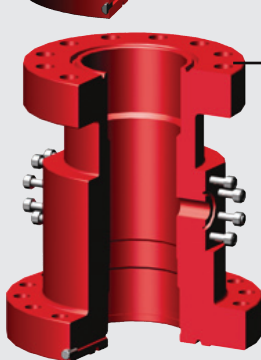


Secondary Seals

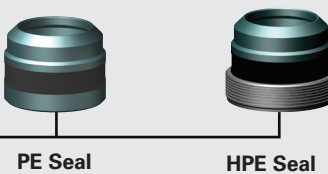
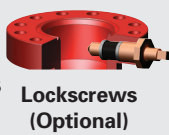


Casing Hangers

Casing Spools

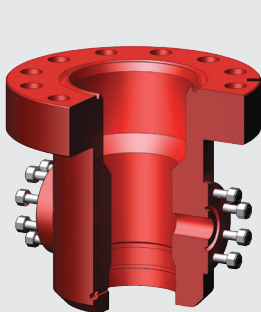
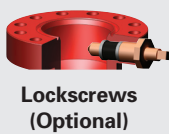


Secondary Seals



Casing Hangers

Casing Heads



Slip on Weld Prep

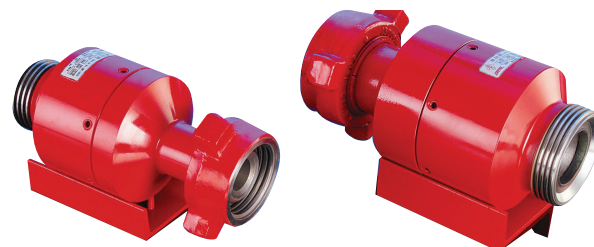
Threaded Bottom Prep

Slip on Weld Prep With "O" Ring



# Flow Iron

WDi is proud to announce its new flow line products  
Full line of pup joints, plug valves, swivel joints and fittings



Available in :

- Standard Service
- H2S Sour Gas Service

|    |                                |   | Service Type     | Pressure  |            |
|----|--------------------------------|---|------------------|-----------|------------|
|    |                                |   |                  | CWP (PSI) | Test (PSI) |
| 1  | Pup Joints                     | NPST 2" & 3" and Lengths 1' to 20'                                  | Standard Service | 15,000    | 22,500     |
|    |                                |   | H2S Service      | 10,000    | 15,000     |
|    |                                | Integral 2" and Lengths 1' to 20'                                   | Standard Service | 15,000    | 22,500     |
|    |                                |   | H2S Service      | 10,000    | 15,000     |
| 2  | Chokes                         | 2"  | Standard Service | 15,000    | 22,500     |
|    |                                |   | H2S Service      | 10,000    | 15,000     |
| 3  | Plug Valves                    | Integral 1"x 2" M/F and 2"x 2" M/F                                  | Standard Service | 15,000    | 22,500     |
|    |                                |   | H2S Service      | 10,000    | 15,000     |
| 4  | Integral Swivels<br>CODE RED   | Style 50 - 2" & 3" and Style 10 -<br>2" & 3"                        | Standard Service | 15,000    | 22,500     |
|    |                                |   | H2S Service      | 10,000    | 15,000     |
| 5  | Swivels CODE<br>Silver         | Style 50 2", 3"   | Standard Service | 6,000     | 9,000      |
|    |                                |   | H2S Service      | 6,000     | 9,000      |
| 6  | Integral Female<br>Union Swege | 2" Fx 2" 11 1/2v, 2"Fx 2 3/8 8rd<br>EUE, 2"Fx 2 7/8 8rd EUE         | Standard Service | 15,000    | 22,500     |
|    |                                |   | H2S Service      | 10,000    | 15,000     |
| 7  | Integral<br>Crossovers         | 2" MxM, 2"Fx F, 2" Mx F   | Standard Service | 15,000    | 22,500     |
|    |                                |   | H2S Service      | 10,000    | 15,000     |
| 8  | Integral Cross                 | FMMM 2" and FFFM 2"   | Standard Service | 15,000    | 22,500     |
|    |                                |   | H2S Service      | 10,000    | 15,000     |
| 9  | Integral Straight<br>ELS       | MF 2"- 3"   | Standard Service | 15,000    | 22,500     |
|    |                                |   | H2S Service      | 10,000    | 15,000     |
| 10 | Integral Cushion<br>ELS        | MF 2", 3"   | Standard Service | 15,000    | 22,500     |
|    |                                |   | H2S Service      | 10,000    | 15,000     |
| 11 | Integral Tee                   | FMM 2"- 3"  | Standard Service | 15,000    | 22,500     |
|    |                                |   | H2S Service      | 10,000    | 15,000     |
| 12 | Integral Tee                   | FFM 2"- 3"  | Standard Service | 15,000    | 22,500     |
|    |                                |   | H2S Service      | 10,000    | 15,000     |
| 13 | Integral TEE                   | FMF 2"- 3"  | Standard Service | 15,000    | 22,500     |
|    |                                |   | H2S Service      | 10,000    | 15,000     |
| 14 | Integral Male Plug<br>& Female | 2"- 3" & 4"   | Standard Service | 15,000    | 22,500     |
|    |                                |   | H2S Service      | 10,000    | 15,000     |
| 15 | Integral Hose<br>Loops         | Style 50 - 2" & 3" and Style 10 - 2"<br>& 3" in Lengths - 4' to 12' | Standard Service | 15,000    | 22,500     |
|    |                                |   | H2S Service      | 10,000    | 15,000     |

# Product Warranty

This warranty is in lieu of all other warranties, expressed or implied, including any implied warranty of merchantability or fitness. WDi warrants that all products sold by it shall be free from defects in workmanship and material when these products are used within the service and pressure range for which they were manufactured. Such warranty shall be binding upon WDi for a period of one year from and after shipment of such product. If, at any time within such period, it is established to the satisfaction of WDi that any product sold or manufactured by WDi is defective at time of shipment, WDi at its option, shall repair or exchange such item, f.o.b. Houston, TX or other WDi designated shipping point or refund

the purchase price paid as a merchandise credit. It is understood that the liability of WDi shall be limited to such refund or replacement and that WDi SHALL NOT BE LIABLE FOR ANY DIRECT, INDIRECT, INCIDENTAL, OR CONSEQUENTIAL DAMAGES ARISING OUT OF ANY DEFECTS OR FROM ANY CAUSE WHATSOEVER. This warranty does not cover deterioration by corrosion or aging of non-metallic parts, including stress corrosion or any other cause of failure other than defects in workmanship and material. Unless repairs to, alterations of, or work done on said products by the Purchaser shall be specifically authorized in writing by WDi, any warranty applicable thereto shall become null and void.

# Terms and Conditions

**PRICES:** All quotations are made for prompt acceptance and any term quoted therein are subject to change without notice after thirty (30) days from the date thereof unless specifically stated otherwise on the quotation.

**ORDERS DELIVERY DATE AND CANCELLATIONS:** Orders will be accepted by WDi subject to approval of and upon such approval a shipping date will be established. The shipping date shall be subject to Force Majeure. Cancellation of orders pertaining to an item of unique nature because of configuration, size, material, etc. or for orders involving excessively large quantities cannot be accepted without full compensation to WDi for all production expenses incurred prior to such proposed cancellation.

**RETURN:** Prior written approval shall be obtained from WDi before the return of any merchandise for merchandise credit or adjustment. Upon such written approval, merchandise shall be returned within 30 days of receipt prepaid, in PRODUCT WARRANTY TERMS AND CONDITIONS unused condition, and shall consist of merchandise currently listed in the

WDi catalog or price list. A minimum 15% restocking charge will be applied to all items that are found not to be defective. Items manufactured from customers' specifications, which are of unusual or unique design, size, material, or quantity shall not be subject to return or credit or replacement.

**COST OF COLLECTION AND ATTORNEY FEES:** Buyer shall be responsible for all our cost and expenses, including attorney fees, incurred by us in collecting the purchase price for goods of services sold beyond its due date inclusive of delinquency charge.

**TERMS OF PAYMENT AND DELINQUENCY CHARGE:** All payments are due Net 30 days following the date of the invoice. All invoices past 45 days owing to the Seller shall bear interest at 1.5% per month (18% annual rate). All accounts are payable in the United States funds, free of exchange rate variation or collection charge.

**STENOGRAPHIC AND CLERICAL ERRORS:** Stenographic and Clerical errors are subject to correction



**Wellhead Distributors International**  
 22420 SH 249  
 Houston, TX 77070  
 Ph: 281-448-1000  
[wellheaddistributors.com](http://wellheaddistributors.com)

**Manufacturing**  
 23540 Coons Rd  
 Tomball TX, 77375  
 Ph: 281-378-4975

**Aftermarket**  
 11633 Spring Cypress  
 Tomball TX, 77377  
 Ph: 281-378-4972

**Central Distribution**  
 22420 SH 249  
 Houston, TX 77070  
 Ph: 281-378-4972

**Locations:**

**Acadiana**  
 231 Industrial Parkway  
 Lafayette, LA 70508  
 Ph: 337-237-6262

**Appalachia**  
 41 Mill St. Building 16  
 Woolrich, PA 17779  
 Ph: 570-769-2670

**Arklatex**  
 3526 Industrial Drive  
 Bossier City, LA 71112  
 Ph: 318-746-6272

**Bakersfield**  
 7470 District Blvd., Ste. E.,  
 Bakersfield, CA 93313  
 Ph: 661-832-6400

**Mid-Continent**  
 1304 S.E. 25th St.  
 Oklahoma City, OK 73129  
 Ph: 405-672-1990

**Ozarks**  
 21 Drillers Dr.  
 Conway, AR 72032  
 Ph: 501-329-6400

**Perimian**  
 2700 Van Street  
 Odessa, TX 79763  
 Ph: 432-334-6800

**South Texas**  
 4222 Russell Dr.  
 Corpus Christi, TX 78408  
 Ph: 361-299-1000

**Tyler**  
 12492 Hwy 155N  
 Tyler, TX 75708  
 Ph: 903-877-4500

**Canada**  
 9732-54 Avenue  
 Edmonton, AB T6E 0A9  
 Ph: 780-440-9714

**WDi Agents:**

**Western Energy**  
 805 South Carlton  
 Farmington, NM 87401  
 Ph: 505-326-1451

**Western Energy**  
 1243 E. Hwy 40  
 Vernal, UT 84078  
 Ph: 435-781-8686

**Western Energy**  
 568 S. Commercial Drive  
 Grand Junction, CO 81505  
 Ph: 970-241-7813

**Westerman**  
 4201 Industrial Pkwy.  
 Evans, CO 80620  
 Ph: 970-330-3377



**Wellhead Distributors International**

22420 SH 249

Houston, TX 77070

Ph: 281-448-1000

[wellheaddistributors.com](http://wellheaddistributors.com)